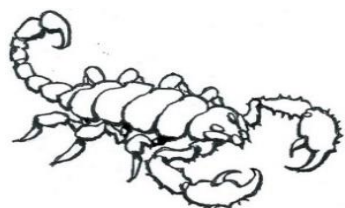


## The Sparth Bottoms Scorpion

From as early as the 1890s, Sparth Bottoms was an area renowned for fossil finds. Quarry workmen had found many parts of prehistoric fossilised plants, including the remains of a fairly complete tree.



Crablike forms were discovered in the early 1900s and in 1903 a new species of scorpion named *Eoscorpium Sparthensis* was unearthed. A cast of this can be seen at Touchstones Museum - the real one is now owned by Manchester Museum.



OS Map Link

<https://osmaps.ordnancesurvey.co.uk/route/4542471/St-Chads-Mandale-Park-and-the-rock-trail>



Thanks to National Lottery players for making this project possible

For more guides, information on the project and resources go to <http://skylightcircusarts.com/news/rochdale-fossils>



If you would like to look deeper into the local geology there are two academic papers about the area.

1. The Rochdale Survey
2. The Geology of the Rossendale Anticline. (Chapter X, page 131, Glacial and Recent Deposits.)

Skylight Circus in Education  
T/A Skylight Circus Arts

St Chad's Fold,  
Sparrow Hill  
Rochdale  
Lancashire  
OL16 1QT



For more information, to book workshops or onto one of our classes, please email [martine.b@skylightcircusarts.com](mailto:martine.b@skylightcircusarts.com) or give us a call on 01706 650676

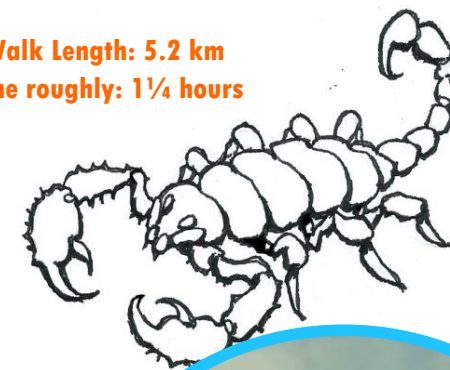
Registered Charity No. 1001570  
Registered Company No. 2567143



## SCORPION WALK

A walk including a geological trail and site where a scorpion fossil was found

Walk Length: 5.2 km  
Time roughly: 1¼ hours



St Chad's, Broadfield Park, Mandale Park and Cemetery Rock Trail.



Design/illustrations: Eira Short Cartoons: Smuzz Photo: Charma Force



The walk starts at Skylight Circus Arts, opposite St Chad's Parish Church, originally a Saxon church with some original stones remaining.

<http://www.rochdaleparishchurches.org.uk/history/history.php>



From Skylight, go through the gates on the left into Broadfield Park. Visit the 5 tonnes Glacial Erratic Boulder, near the bandstand. This originally came from Borrowdale and had stood at Cowm Top Farm, Castleton before being donated to the borough.

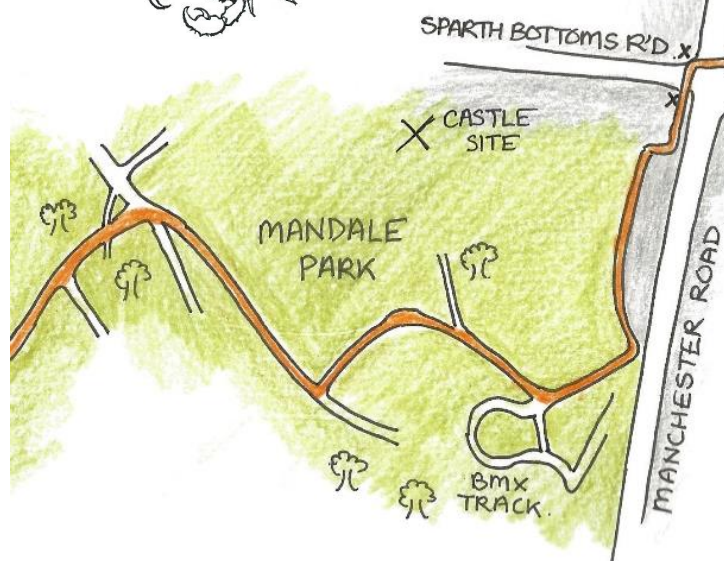
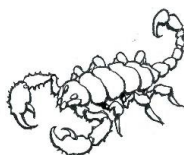
<https://www.megalithic.co.uk/article.php?sid=26279>



Leave the park at Drake Street and cross Manchester Rd at the lights. Cross the car park on your right to be beside a less busy road.

Walk to Mandale Park. Go along the park paths. The park was the site of Sparth Bottoms Quarry, where the scorpion and trees were found. Read more about these and see pictures in the Rochdale Observer article at:

<https://www.pressreader.com/uk/rochdale-observer/20161119/281698319336795>



On the promontory to the right stood Rochdale Castle, a wooden Motte and Bailey, inhabited until the 13th century. Castle Avenue and the Castle Inn are nearby.

<http://www.gatehouse-gazetteer.info/English%20sites/3023.html>



START



[https://en.wikipedia.org/wiki/Rochdale\\_Castle](https://en.wikipedia.org/wiki/Rochdale_Castle)

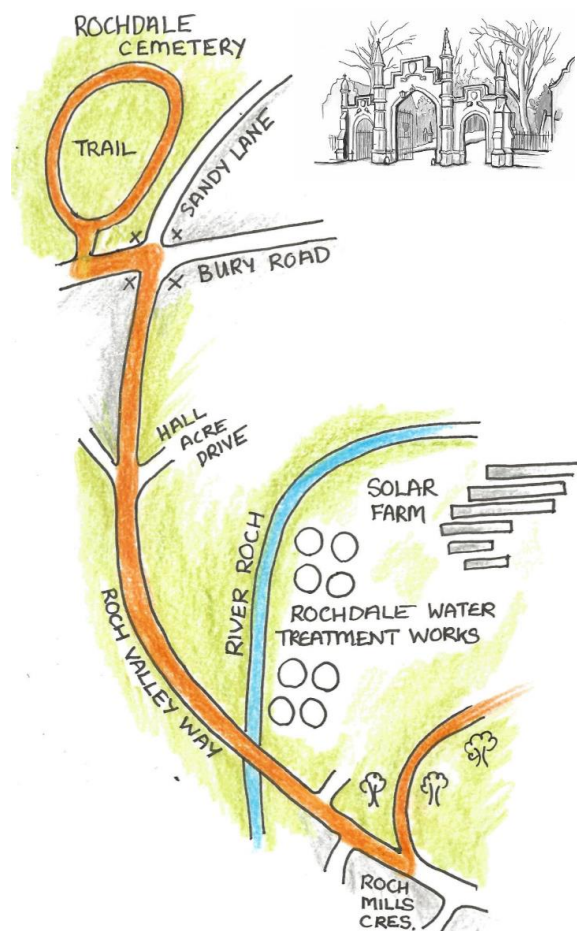
To find out more about the arthropods found at Sparth Bottoms read the following paper:

[https://www.academia.edu/844994/Arthropod\\_types\\_from\\_Sparth\\_Bottoms\\_in\\_the\\_Howard\\_Collection\\_Rochdale\\_Museum\\_Service](https://www.academia.edu/844994/Arthropod_types_from_Sparth_Bottoms_in_the_Howard_Collection_Rochdale_Museum_Service)

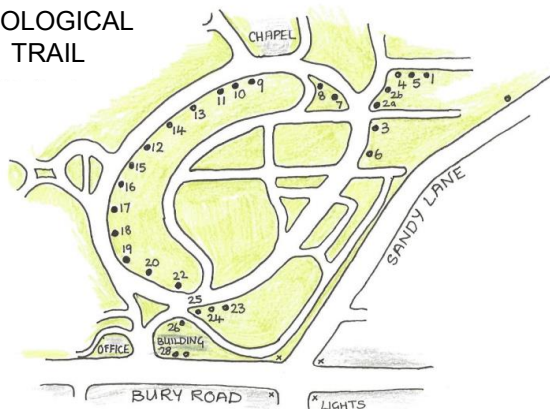




At the bottom of the path there is a left turn by the solar panel farm and sewage works. Follow this until you find Roch Valley Way. Turn right and walk up the road. Cross at the traffic lights at the main junction with Bury Road. You will see the entrance to the Cemetery clearly.



## ROCHDALE GEOLOGICAL TRAIL



Inside Rochdale Cemetery is a Geological Trail of 27 different types of stones. Each stone had a name and label of origin. They are arranged in chronological order. There is also a Starting Stone and a Finishing Stone which are quite difficult to find, as the road was re-routed after the trail had been laid. The Starting Stone is to the right of the Cemetery office, just over the wall. Look for the inscription on it.

<http://www.mangeolasoc.org.uk/rochdalecemeteryreport2009.htm>



## A LIST OF THE STONES:

1. Basalt columns Giant's Causeway, Ireland
2. Red Granite/Grey Granite Aberdeen
3. White Marble Carrara, Italy
4. Pink Serpentine Ireland
5. Green Porphyrite North Wales
6. Clay Slate Bangor, Wales
7. Wenlock Limestone Wenlock, Salop
8. Red Sandstone Dumbartonshire
9. Black Marble Galway, Ireland
10. Encrinital Marble Limerick, Ireland
11. Mountain Limestone Dove Holes, Buxton
12. Cannel Coal/Ironstone Bullion Wigan
13. Millstone grit Blackstone Edge, Littleborough
14. Fine Grained sandstone Todmorden
15. Flagstone Whitworth
16. Sandstone Bagslate, Rochdale
17. Sandstone Whitworth
18. Sandstone Craighleith, Scotland
19. Limestone Roche Abbey near Newquay
20. New Red Sandstone Runcorn
21. Gypsum (weathered remains only)
22. Limestone fragments Whitby – Lyme Regis
23. Stonesfield Slate Oxon
24. Corallian Limestone (corroded)
25. Portland Stone Isle of Portland?
26. Bethersden Marble Kent
27. Kentish Rag Maidstone
28. Glacial Stones Small boulders found in cemetery

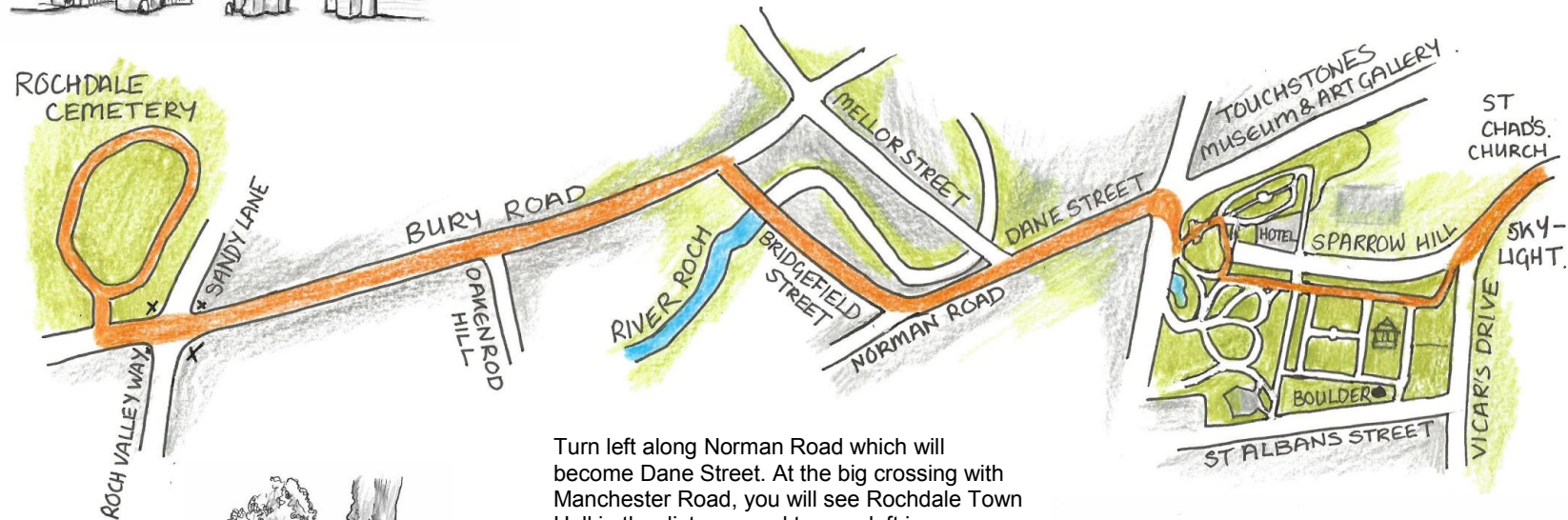
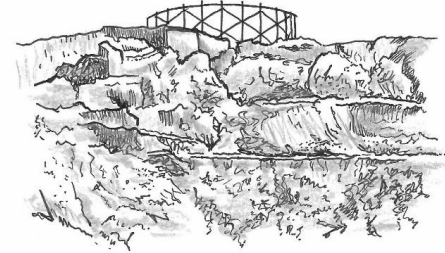
[https://www.geocurator.org/images/resources/geocurator/vol6/geocurator\\_6\\_6.pdf](https://www.geocurator.org/images/resources/geocurator/vol6/geocurator_6_6.pdf)





Leaving the cemetery turn left, crossing at the lights and go down Bury Road towards Rochdale Centre.

Turn right across the footbridge to Bridgefield Street. When you get to Norman Road, you will see industrial units on the site of the Old Gas Works. The skeleton of the gasometer is visible in one of the old Sparth Bottoms Quarry pictures.



Turn left along Norman Road which will become Dane Street. At the big crossing with Manchester Road, you will see Rochdale Town Hall in the distance and to your left is Touchstones Museum, Art Gallery and Cafe. Both are well worth a visit!

On the right across the road is the John Bright Statue. Formerly there was the statue of an Angel here too. Walk up through the park, taking the pathways of your choice, perhaps visiting the statues or over the Victoria Footbridge. Head back to St Chad's Church.

